



ARGENTARIO  
GOLF & WELLNESS RESORT

AUTOGRAPH COLLECTION®  
HOTELS

# CHOOSE A SUITE

---

MUCH MORE THAN A ROOM.  
CHOOSE TO BELONG TO BEAUTY.  
EXPERIENCE SOMETHING TRULY UNIQUE.





---

At Argentario Golf & Wellness Resort, each suite is a place to be lived, not simply stayed in.

Generous spaces, natural light, refined details, and a private terrace opening onto the most authentic side of Maremma transform every stay into a deeply personal experience.

Here, luxury is defined by silence, privacy, and beauty. Each suite is unique: contemporary lines, classical touches, or eclectic atmospheres blending vintage furnishings with subtle oriental influences. A refined balance between design and nature, where you can truly feel elsewhere.

## CLASSIC SUITES

Essential elegance, intimate atmospheres, contemporary details.

---

## DELUXE SUITES

More space, more character, more possibilities.

CLASSIC SUITE

# BUSINESS SUITE

Dark woods, warm tones, and contemporary artworks shape an intimate and sophisticated space.

A welcoming lounge area leads into a spacious, light-filled bedroom, while the freestanding bathtub creates a subtle dialogue with the private terrace.



- King-size bed
- Bathroom with bathtub and separate shower
- 55" LCD TV
- Small studio area
- Suite size: 50 m<sup>2</sup> / 538 ft<sup>2</sup>
- Panoramic terrace: 53 m<sup>2</sup> / 570 ft<sup>2</sup>

Up to 2 guests



CLASSIC SUITE

# GALLERY SUITE

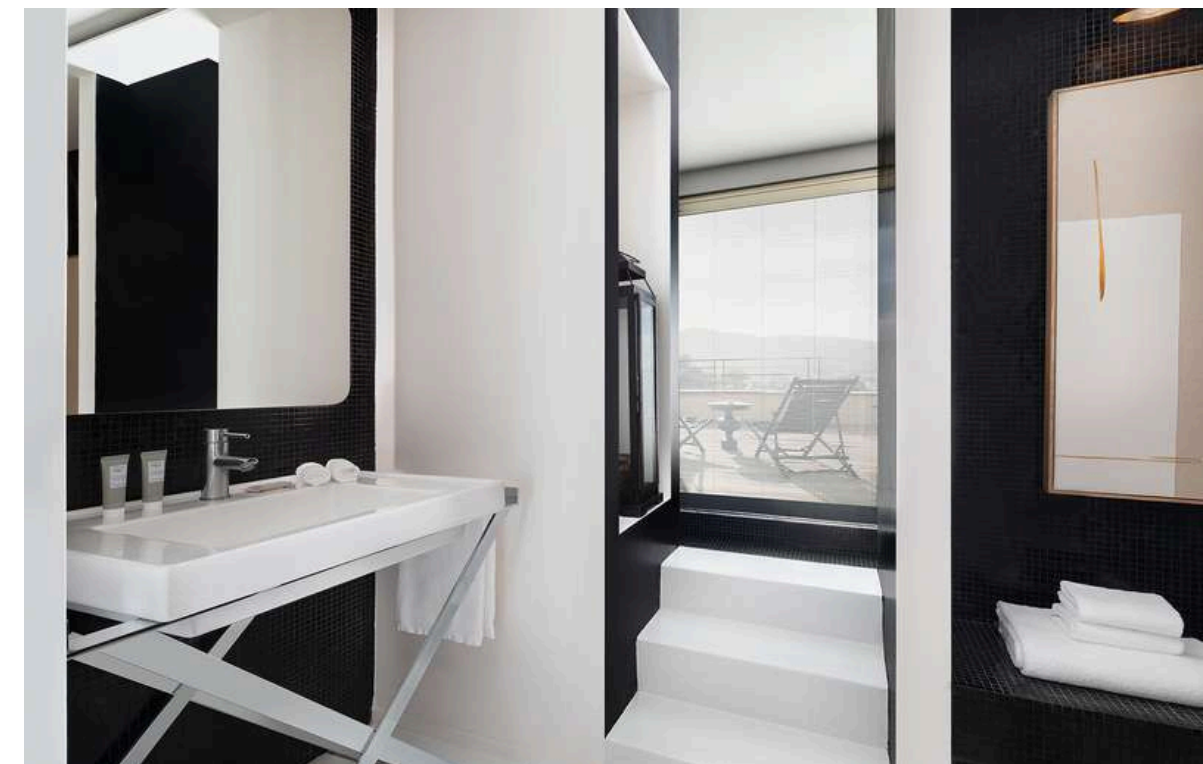
A refined interplay of black and white contrasts, softened by natural elements.

The panoramic shower and the lounge area create an intimate and relaxing atmosphere.



- King-size bed
- Large shower with Bisazza mosaic tiles
- 55" LCD TV
- Suite size: 50 m<sup>2</sup> / 538 ft<sup>2</sup>
- Panoramic terrace: 43 m<sup>2</sup> / 462 ft<sup>2</sup>

Up to 2 guests

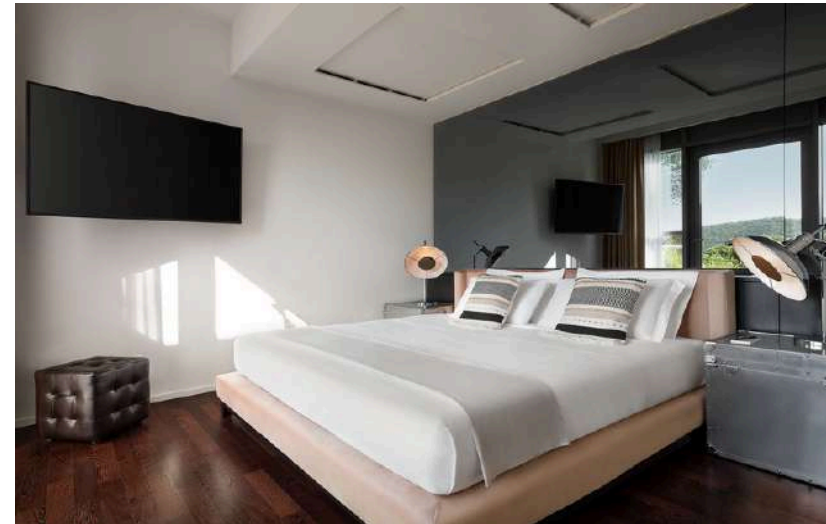


DELUXE SUITE

# CLUB DELUXE SUITE

A warm and sophisticated suite, featuring precious materials and inviting atmospheres that create an elegant and relaxing space.

The two private terraces and the double whirlpool bathtub invite you to indulge in moments of pure wellbeing.



- King size bed
- Living room with sofa bed
- 55" LCD TV in living room and bedroom
- Bathroom with double whirlpool tub and separate shower
- Connecting option with a Travel Club
- Suite size: 60 m<sup>2</sup> / 645 ft<sup>2</sup>
- Two terraces: approx. 13 m<sup>2</sup> / 140 ft<sup>2</sup> each

Up to 2 adults  
and 1 child under  
12 years old

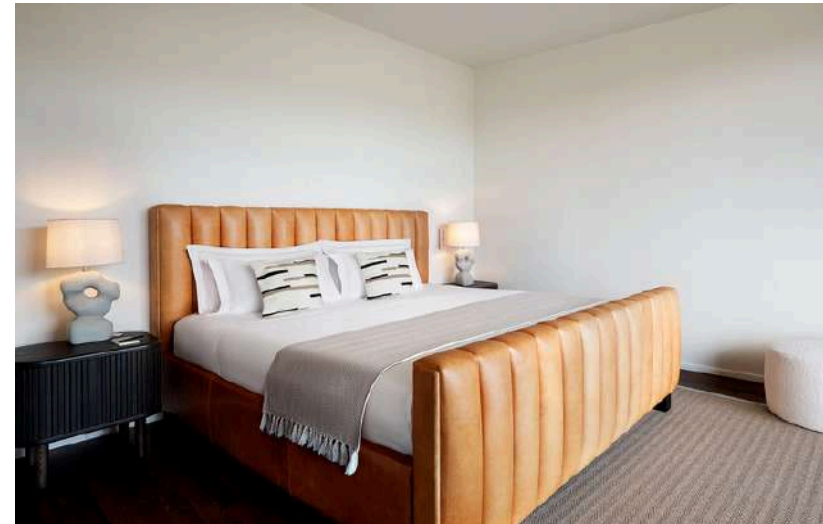


DELUXE SUITE

# MASTER SUITE

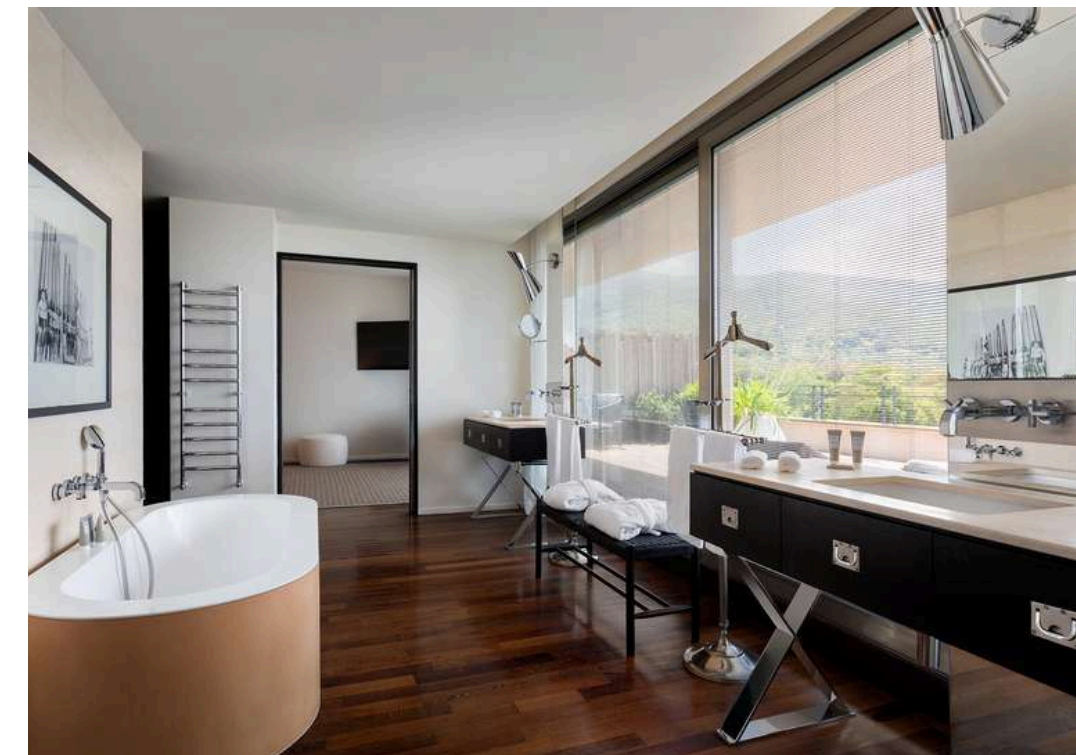
An apartment in warm tones, enriched with Berber rugs, contemporary art, and enveloping materials.

The stone bathroom flows through the space as a distinctive architectural feature.



- King-size bed
- Living room with sofa bed
- 55" LCD TV in living room and bedroom
- Bathroom with freestanding bathtub and separate shower
- Suite size: 60 m<sup>2</sup> / 645 ft<sup>2</sup>
- Panoramic terrace: 770 m<sup>2</sup> / 750 ft<sup>2</sup>

Up to 3 adults  
or 2 adults and  
2 children under  
12 years old



DELUXE SUITE

# HOME SUITE

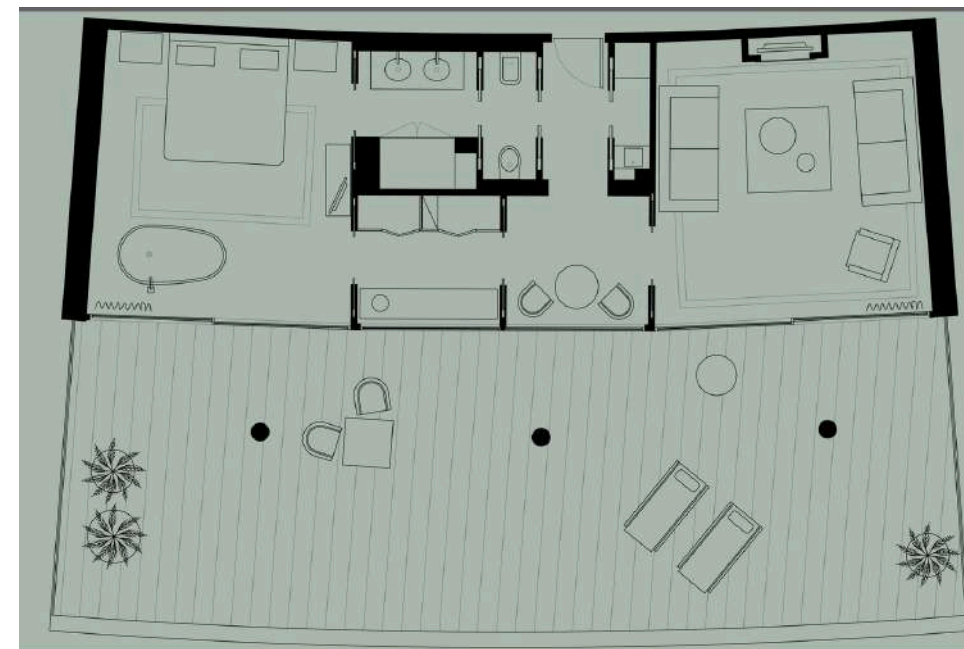
As welcoming as a private residence, with light woods, vintage furnishings, and bright, airy spaces.

The in-room freestanding bathtub and the living area invite you to enjoy the suite in complete freedom.



- King-size bed
- Living room with two sofas
- Freestanding tub in the bedroom
- Separate shower in the bathroom
- 55" LCD TV in the bedroom
- Small lounge with coffee corner
- Suite size: 70 m<sup>2</sup> / 750 ft<sup>2</sup>
- Panoramic terrace: 75 m<sup>2</sup> / 807 ft<sup>2</sup>

Up to 2 adults  
and 2 children  
under 12 years old

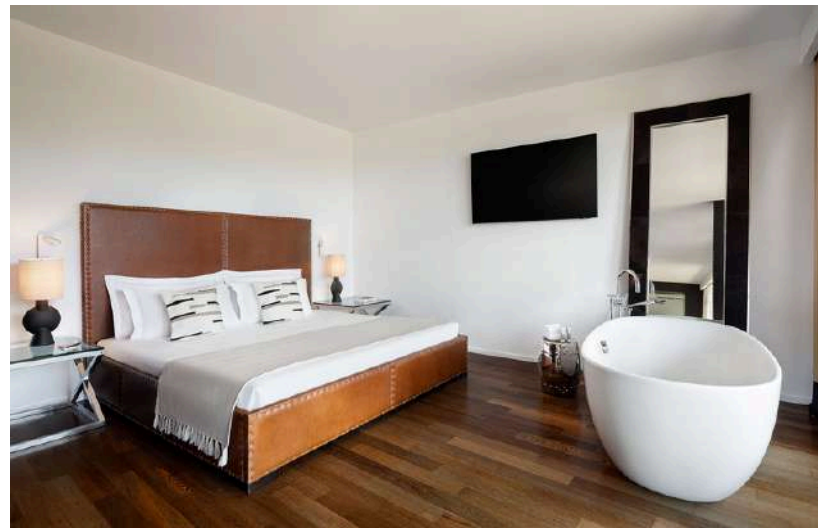


DELUXE SUITE

# PENTHOUSE SUITE

An exclusive apartment where fine leathers and precious woods meet the highest level of comfort.

A fireplace, dining area with wine cellar, and distinct living spaces create a truly unique stay.



- King-size bed (baby cot on request)
- Freestanding tub in the bedroom
- Separate shower in the bathroom
- Living room with 2 sofas and fireplace
- 55" LCD TV in living room and bedroom
- Dining room with small wine cellar
- Study area with steel bureau
- Suite size: 80 m<sup>2</sup> / 860 ft<sup>2</sup>
- Panoramic terrace: 60 m<sup>2</sup> / 645 ft<sup>2</sup>

Up to 2 guests

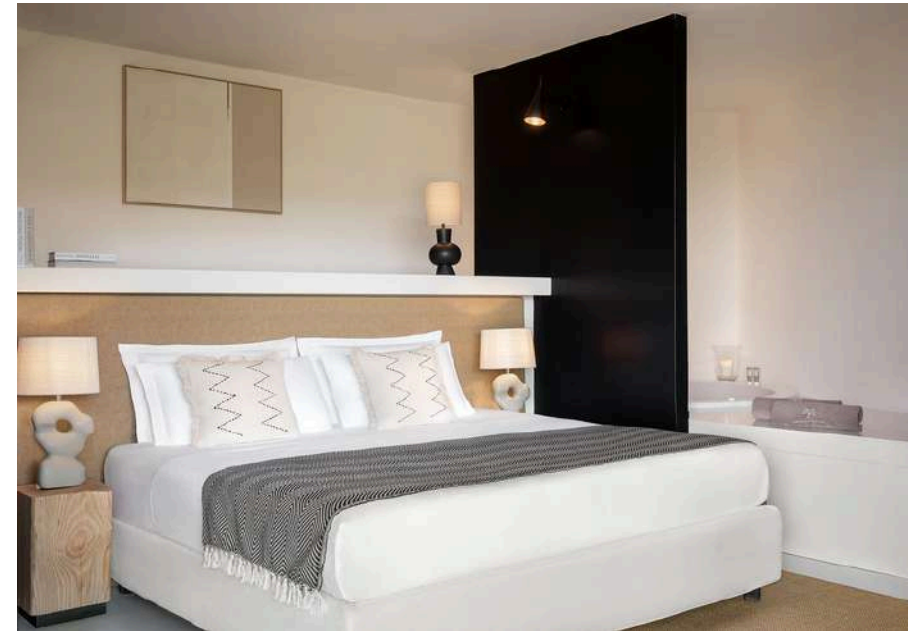


DELUXE SUITE

# SPA LOFT SUITE

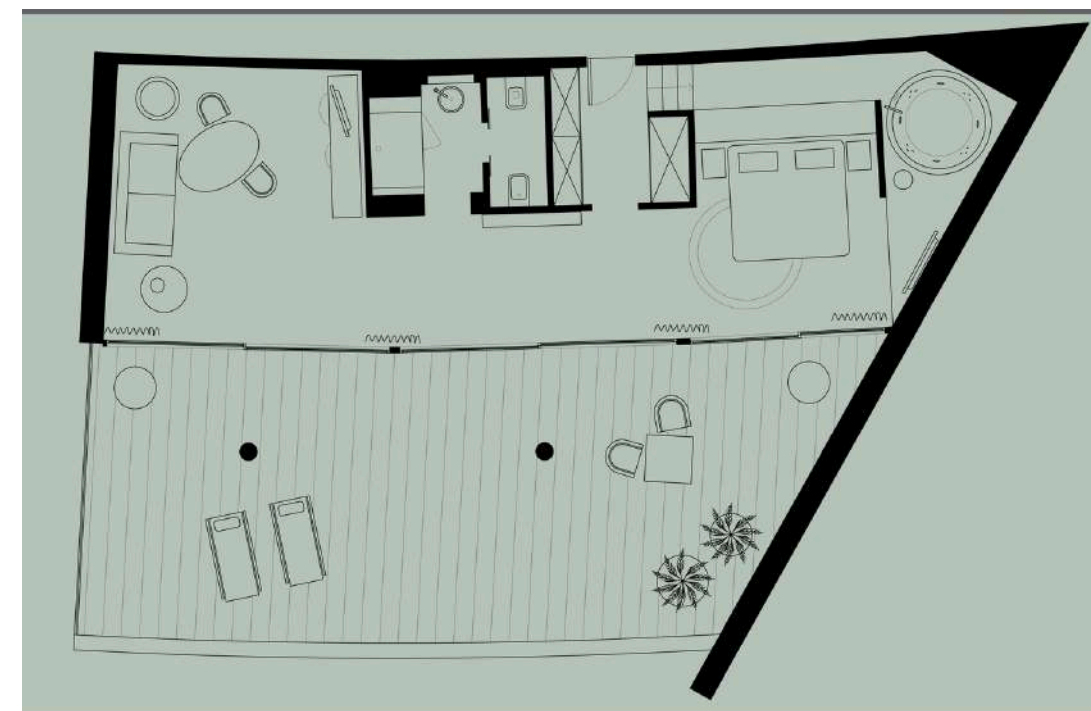
An icon of wellness, where open-plan space becomes an experience.

The extra-large whirlpool bathtub, steam room, and private fitness area transform the suite into a personal spa, to be enjoyed at your own pace.



- King-size bed (baby cot on request)
- Extra-large whirlpool bathtub
- Turkish bath
- Technogym Kinesis equipment
- Exercise bike
- Separate shower in the bathroom
- 55" LCD TV in living room and bedroom
- Suite size: 70 m<sup>2</sup> / 750 ft<sup>2</sup>
- Panoramic terrace: 60 m<sup>2</sup> / 645 ft<sup>2</sup>

Up to 3 adults  
or 2 adults and  
2 children under  
12 years old



# IN-SUITE EXPERIENCES

---

The suites become the perfect stage for tailor-made moments.

A private sunset dinner on the terrace, a special setup for an anniversary, a marriage proposal, a photo shoot, or a wellness treatment in the comfort of your suite—every detail is carefully curated to create something truly unforgettable.

For business travelers, suites can also transform into private spaces for meetings, showrooms, or executive gatherings, in a discreet and highly inspiring setting.

## EXAMPLES OF BESPOKE EXPERIENCES AVAILABLE UPON REQUEST

---

- In-suite breakfast
- In-suite massage
- Private terrace dinner
- Photo shoot
- Custom setup





ARGENTARIO  
GOLF & WELLNESS RESORT

AUTOGRAPH COLLECTION®  
HOTELS



SUITE EXPERIENCE. MORE SPACE. MORE PRIVACY. MORE EMOTION.

ARGENTARIO GOLF & WELLNESS RESORT, AUTOGRAPH COLLECTION  
Località Le Piane, 58019 Porto Ercole (GR), Tuscany - Italy

+39 0564 810 292 | [booking@argentarioresort.it](mailto:booking@argentarioresort.it) | [argentarioresort.it](http://argentarioresort.it)

